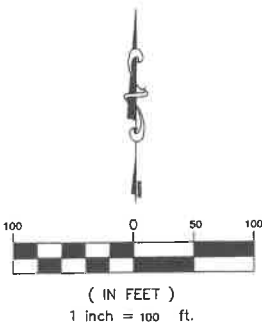


# PLAT OF SECOND WILLIAMS FAMILY SUBDIVISION IN THE SW 1/4 OF THE NW 1/4 OF SECTION 32-T125N-R58W OF THE 5th P.M., MARSHALL COUNTY, SOUTH DAKOTA

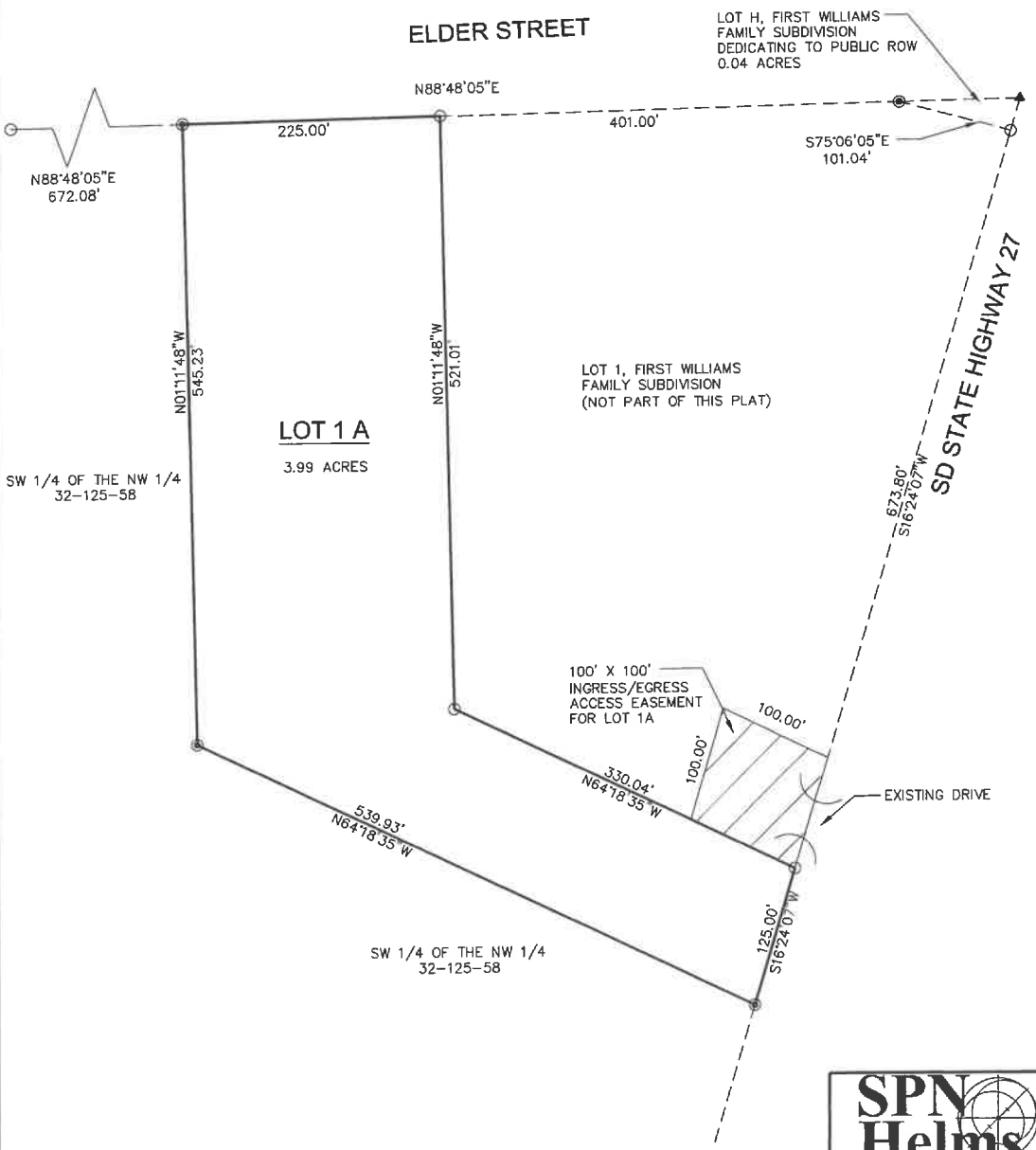


**LEGEND**

- FOUND PROPERTY CORNER
- SET 5/8" X 18" REBAR WITH SURVEY CAP STAMPED KURKOWSKI RLS 17051
- SET 3" SPIKE W/ WASHER STAMPED KURKOWSKI RLS 17051
- ▲ CALCULATED POSITION
- ▨ INGRESS/EGRESS ACCESS EASEMENT

**BASIS OF BEARINGS**

SD STATE PLANE NORTH ZONE  
NAD 83 (2011) US SURVEY FEET  
DISTANCES ARE GROUND



**SPN Helms**

416 PRODUCTION STREET N.  
P.O. Box 111  
Aberdeen, S.D. 57401  
Phone: 605.225.1212  
Fax: 605.225.3189

CIVIL ENGINEERS & LAND SURVEYORS

DWG. 9568-LS BY: GSK SHEET 1 OF 3