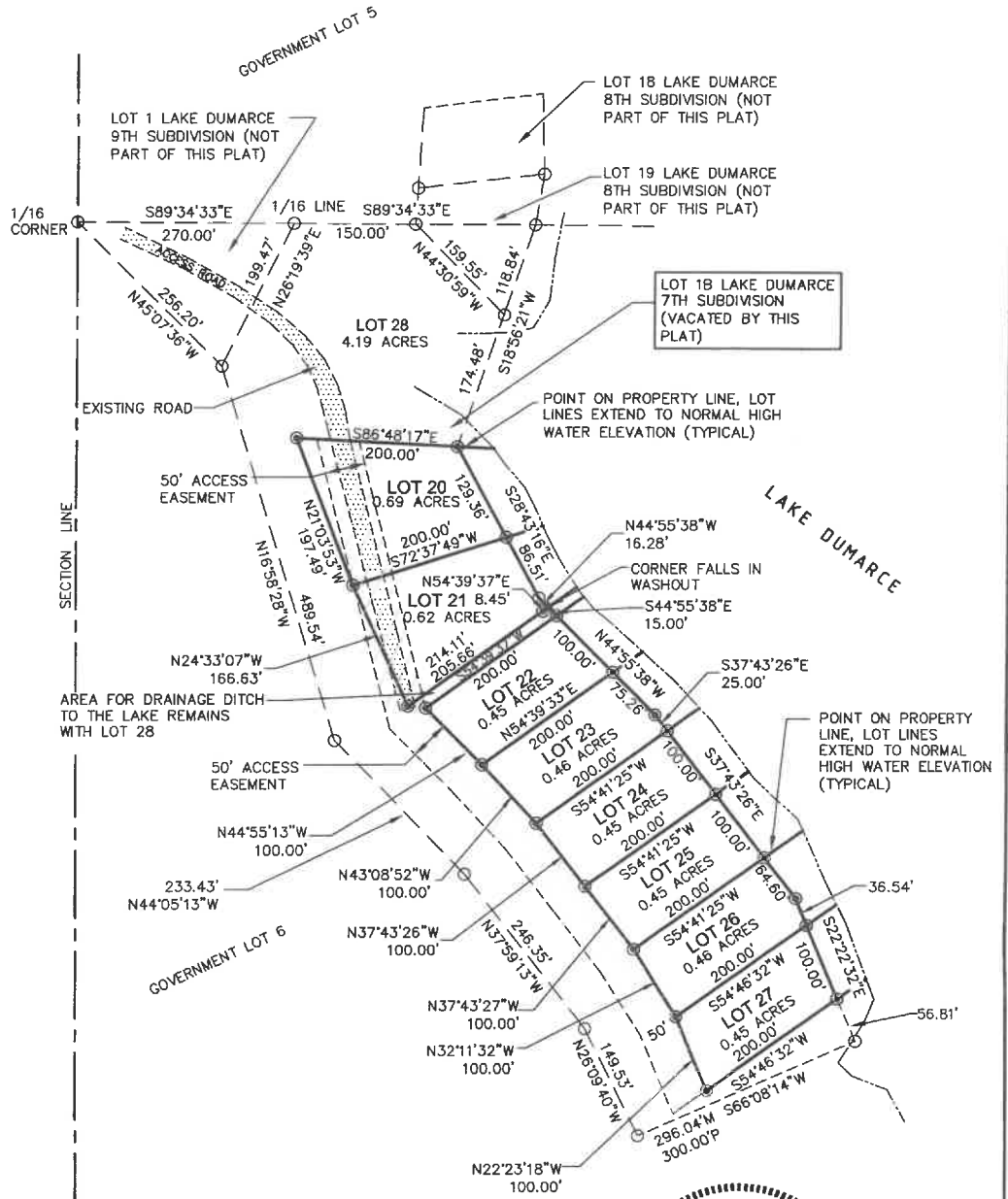



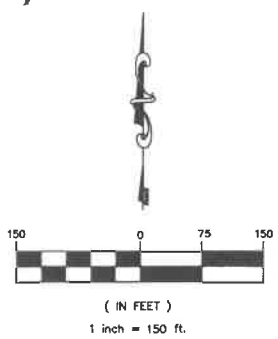
# PLAT OF LAKE DUMARCE TENTH SUBDIVISION IN GOVERNMENT LOT 6 IN SECTION 24 T127N R54W OF THE 5TH P.M., MARSHALL COUNTY, SOUTH DAKOTA



### LEGEND

- FOUND PROPERTY CORNER (LS 4423)
- ⊙ SET 5/8" X 18" REBAR WITH SURVEY CAP STAMPED KIESO RLS 9214
- ▲ CALCULATED POSITION
- M MEASURED IN FIELD
- P PREVIOUSLY PLATTED

 50' WIDE PERMANENT ACCESS EASEMENT



**BASIS OF BEARINGS**  
GPS OBSERVATION



**Helms ASSOCIATES**  
CIVIL ENGINEERS & LAND SURVEYORS

416 PRODUCTION STREET N.  
P.O. Box 111  
Aberdeen, S.D. 57401  
Phone: 605.225.1212  
Fax: 605.225.3189

DWG. 9750-LS BY: BKK SHEET 1 OF 3