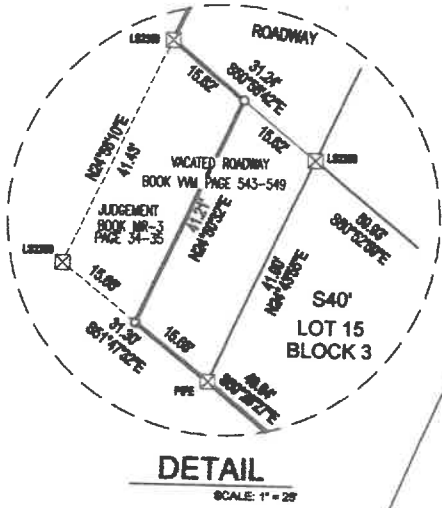


PLAT OF

BAIR'S SECOND ADDITION
 LOCATED IN THE NE 1/4 OF SECTION 14,
 T126N, R54W OF THE 5TH P.M.,
 MARSHALL COUNTY, SOUTH DAKOTA



SECTION 14
 T126N R54W

SECTION 13
 T126N R54W

BLOCK 10
 SCHLEKEWY
 ADDITION

LOT 1
**BAIR'S
 SECOND
 ADDITION**

Contains ± 2.16 AC

LOT 12
 BLOCK 3

SCHLEKEWY ADDITION
 LOT 13
 BLOCK 3

LOT 14
 BLOCK 3

LOT 15
 BLOCK 3

LOT 1
 BLOCK 6

LOT 1
 BLOCK 4

SCHLEKEWY ADD
 LOT 2
 BLOCK 6

LOT 18
 BLOCK 3

CLEAR LAKE

REGISTERED LAND SURVEYOR
 REG. NO.
 13482
 LUNDEE M
 STADTLER
 SOUTH DAKOTA

Lundee M Stadler
 LUNDEE M STADTLER
 REGISTERED LAND SURVEYOR 13482



Holton
 SURVEYING & DESIGN, LLC



GPS-NORTH
 SCALE: 1" = 75'

O = GIVEN FROM PIN SET
 B = RECOVERED MONUMENT

120 E HICKORY ST, BISSETON SD PH 605-698-3883
 DRAWN: 7/28/24 FIELD: 7/23/24 1412854-2016
 PLATTING: LAND SURVEYOR/REG. NO. 13482

BLUESY PREPARED WITHOUT THE
 ASSISTANCE OF A TITLE COMMITTEE

THIS PLAT SHALL VACATE:
 LOT 1, BAIR'S ADDITION IN THE NE 1/4 OF
 SECTION 14, T126N, R54W OF THE 5TH P.M.,
 MARSHALL COUNTY, SOUTH DAKOTA AS FILED IN
 PLAT BOOK 3 PAGE 301 ON OCTOBER 29TH, 1906.