

Plat of:

**HEITMANN BROTHERS SUBDIVISION**

in Gov't Lots 2,3,4, & 5, N1/2NW1/4, NE1/4 and NE1/4SE1/4, Section 24, T127N, R54W, of the 5th P.M., Marshall County, South Dakota

This Plat shall VACATE LOT 2A OF LAKE DUMARCE SEVENTH SUBDIVISION IN SECTION 24, T127N, R54W OF THE 5TH P.M., MARSHALL COUNTY, SOUTH DAKOTA AS FILED IN BOOK 4 PAGE 111, JAN. 16, 2007 REGISTER OF DEEDS



NORTH GPS/VRS

SCALE: 1" = 600'

- = CAPPED IRON PIN SET
  - ⊙ = RECOVERED MONUMENT
  - ⊗ = Red Capped RLS 4423
  - △ = Previously Surveyed Point
  - ⊠ = T-POST, CARBONITE POST
- Unmeandered water shown for reference only

THIS SURVEY DIVIDED LOT 2A INTO TWO EQUAL AREAS. THIS PLAT SHOWS THE CORRECT COMPARABLE DRY GROUND ACRES AT TIME OF SURVEY



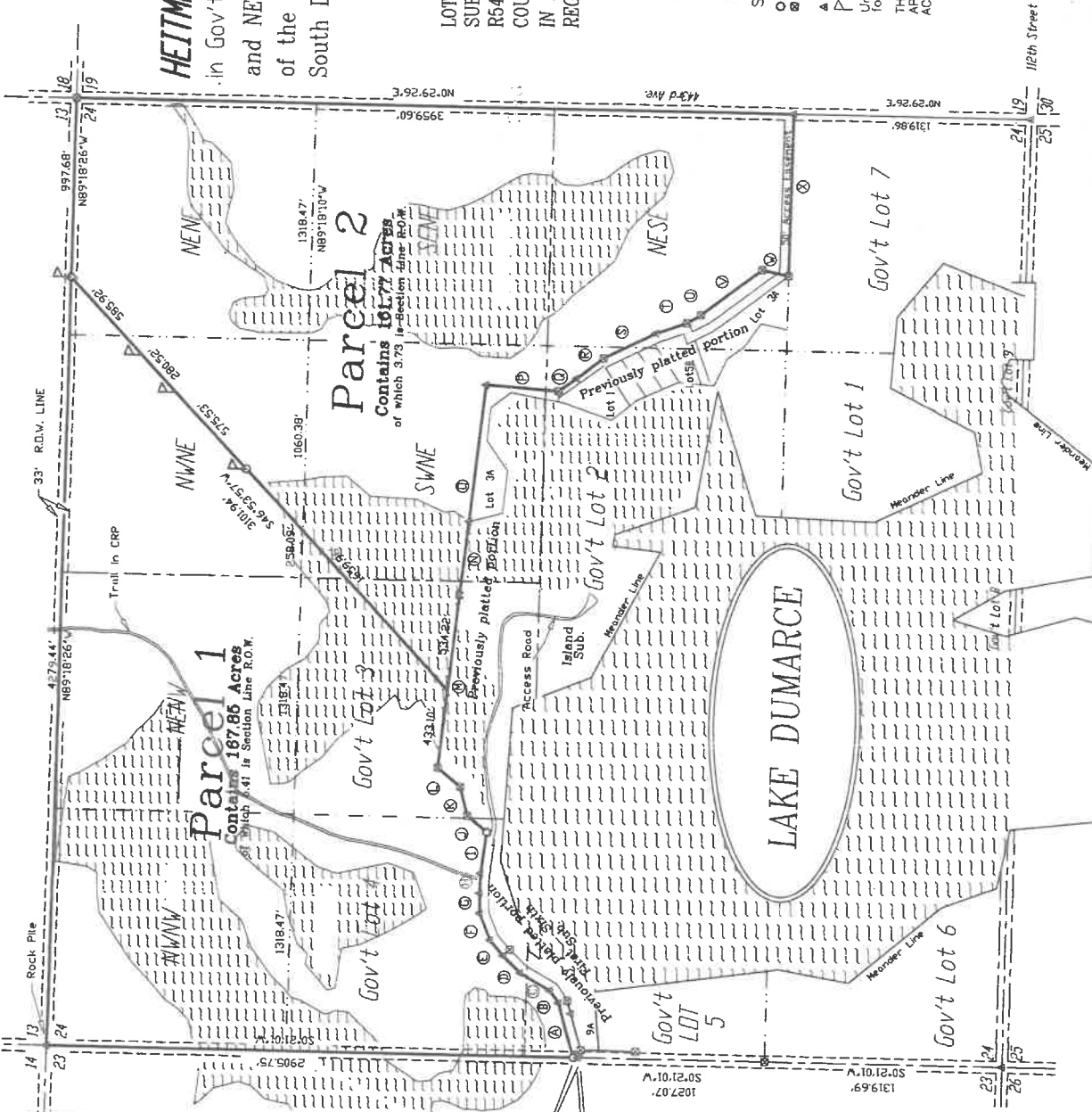
DRAWN: RUMisterek

128 East Hickory, Sisseton, SD. PH. 1-605-698-3850

DRAWN: Aug. 2023

BOUNDARY SEGMENTS	LENGTH	BEARING
①	313.67'	N74°14'32"E
②	83.61'	N55°19'20"E
③	192.36'	N29°41'26"E
④	133.33'	N43°41'04"E
⑤	112.90'	N49°17'00"E
⑥	159.75'	N67°32'51"E
⑦	112.81'	N87°34'52"E
⑧	109.88'	S88°31'45"E
⑨	233.07'	S82°53'57"E
⑩	141.17'	N39°19'11"E
⑪	167.08'	N75°14'45"E
⑫	163.09'	N38°29'36"E
⑬	967.32'	S83°50'56"E
⑭	411.11'	S83°43'49"E
⑮	763.55'	S83°56'26"E
⑯	402.65'	S04°09'32"W
⑰	122.23'	S36°20'26"E
⑱	183.31'	S38°24'27"E
⑲	319.76'	S26°23'04"E
⑳	178.59'	S19°15'26"E
㉑	88.19'	S31°01'30"E
㉒	423.10'	S37°29'26"E
㉓	151.96'	S11°58'02"W
㉔	900.00'	S89°17'19"E

Parcel 1	
Contains 167.85 Acres	
Gov't Lot 5	189 Acres
Gov't Lot 4	3526 Acres
Gov't Lot 3	2130 Acres
N1/2NW1/4	7992 Acres
NW1/4NE1/4	2763 Acres
NE1/4NE1/4	113 Acres
SW1/4NE1/4	0.73 Acres
Parcel 2	
Contains 161.77 Acres	
Gov't Lot 2	137 Acres
Gov't Lot 3	4.16 Acres
NW1/4NE1/4	1233 Acres
NE1/4NE1/4	3883 Acres
SE1/4NE1/4	3994 Acres
SW1/4NE1/4	2969 Acres
NE1/4SE1/4	3515 Acres



DRAWN: Aug. 2023

128 East Hickory, Sisseton, SD. PH. 1-605-698-3850

# MARSHALL COUNTY WEB VIEWER



8/29/2023, 3:54:35 PM

- TOWNSHIPS
- SECTIONS
- PARCELS

