

PLAT OF
ROYKOTA LEGACY ESTATES
SECOND SUBDIVISION
 BEING A REPLAT OF PART OF LOT 14, ROYKOTA LEGACY ESTATES
 IN GOVERNMENT LOT 5 OF SECTION 27 TOWNSHIP 128 NORTH, RANGE 58 WEST
 OF THE 5TH P.M., MARSHALL COUNTY, SOUTH DAKOTA

SEC. 27, T126N, R55W
 SEC. 34, T126N, R55W



INTERSTATE ENGINEERING
 Interstate Engineering, Inc.
 1899 4th St. N.
 Wahpeton, ND 58074-0887
 P: (701) 642-5521
 F: (701) 642-5521
 www.interstateeng.com
 Offices in North Dakota, Minnesota, Montana and South Dakota

Professionals you need, people you trust.



LEGEND
PLAT OF ROYKOTA LEGACY ESTATES

- = CORNER MARKED WITH A 5/8" x 1/8" SMOOTH IRON PIN WITH ALUMINUM CAP MARKED "LS 7690"
- = EXISTING OR FOUND CORNER MONUMENT
- 1 = LOT NUMBER
- = PLAT BOUNDARY LINE
- = NEW PROPERTY LINE
- = EXISTING PROPERTY LINE
- = NEW EASEMENT LINE
- = EXISTING EASEMENT LINE

EASEMENTS OF RECORD
 DOCUMENT NO. 31946:
 20' ELECTRIC LINE EASEMENT
 BLANKETING OVER GOVERNMENT LOT 5.
 DOCUMENT NO. 41930:
 30' WATER LINE EASEMENT
 BLANKETING OVER LOTS 1, 3 & 4,
 ROYKOTA SUBDIVISION.

Notes:
 By the action of this plat, a part of Lot 14, Roykota Legacy Estates, Recorded as Plat Book No. 5, Page 27 as shown is hereby vacated.

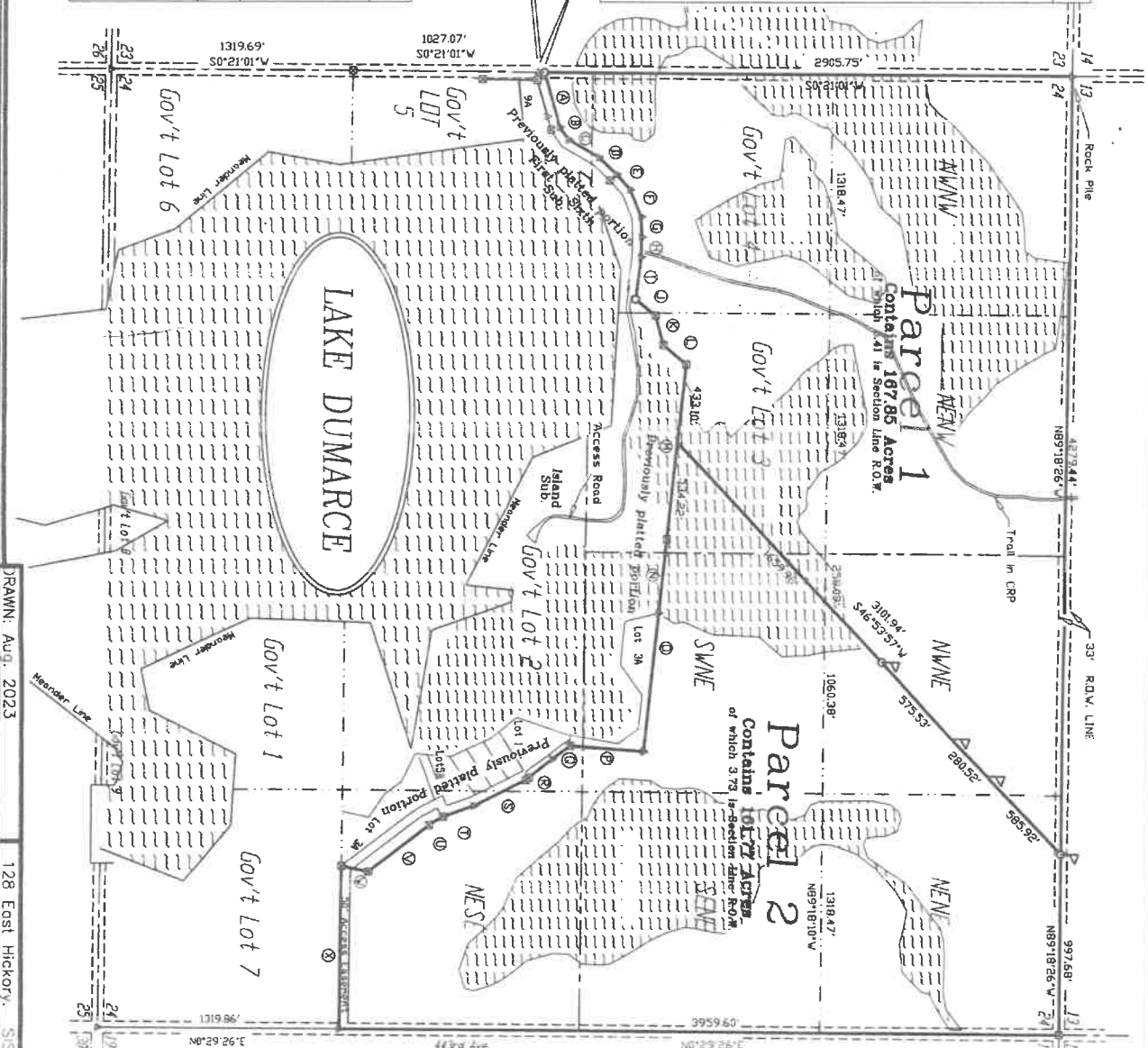
U.S. HIGHWAY #25

East Boundary of the Plat of Roykota Legacy Estates
 $\Delta = 14^{\circ}55'37''$ L=1185.68' R=4550.00' CB=N10°02'29"E CD=1182.07'

BOUNDARY SEGMENTS

LENGTH	BEARING
313.67'	N74°14'32"E
83.61'	N55°19'20"E
192.36'	N29°41'26"E
133.33'	N43°41'04"E
112.90'	N49°17'10"E
159.75'	N67°52'51"E
112.81'	N88°34'42"E
109.88'	S88°31'45"E
233.07'	S82°53'57"E
114.17'	N39°19'11"E
161.57'	N25°14'43"E
165.60'	N29°18'35"E
967.32'	S87°50'55"E
411.11'	S83°43'49"E
763.65'	S83°56'56"E
402.63'	S04°09'32"W
122.23'	S36°20'26"E
183.31'	S38°29'32"E
319.76'	S26°23'04"E
178.59'	S19°15'25"E
88.02'	S31°11'37"E
423.10'	S37°28'42"E
151.95'	S11°58'51"W
900.00'	S89°17'33"E

Parcel 1	
Gov't Lot 5	189 Acres
Gov't Lot 4	3526 Acres
Gov't Lot 3	2130 Acres
N1/2NW1/4	79.91 Acres
NW1/4NE1/4	27.63 Acres
NE1/4NE1/4	113 Acres
SW1/4NE1/4	0.73 Acres
Contains 167.85 Acres	
Parcel 2	
Gov't Lot 2	137 Acres
Gov't Lot 3	446 Acres
NW1/4NE1/4	12.33 Acres
NE1/4NE1/4	38.83 Acres
SE1/4NE1/4	39.94 Acres
SW1/4NE1/4	29.65 Acres
NE1/4SE1/4	35.15 Acres
Contains 161.77 Acres	



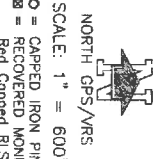
DRAWN: Aug. 2023

128 East Hickory, Sisseton, SD PH. 1-605-698-3850

DRAWN: Rlmsterek

Plat of:
HEITMANN BROTHERS SUBDIVISION
 in Gov't Lots 2,3,4, & 5, N1/2NW1/4, NE1/4
 and NE1/4SE1/4, Section 24, T127N, R54W,
 of the 5th P.M., Marshall County,
 South Dakota

This Plat shall vacate
 LOT 2A OF LAKE DUMARCE SEVENTH
 SUBDIVISION IN SECTION 24, T127N,
 R54W OF THE 5TH P.M., MARSHALL
 COUNTY, SOUTH DAKOTA AS FILED
 IN BOOK 4 PAGE 111, JAN. 16, 2007
 REGISTER OF DEEDS



- NORTH GPS/VRS
- SCALE: 1" = 600'
- = CAPPED IRON PIN SET
- ⊗ = RECOVERED MONUMENT
- Red Capped RLS 4423
- ▲ = Previously Surveyed Point
- P = T-POST, CARBONITE POST
- Unrecovered water shown for reference only

THIS SURVEY DIVIDED LOT 2A INTO
 APPROX. COMPARABLE GROUND
 ACERAGES AT TIME OF SURVEY

