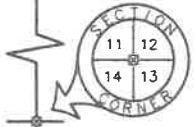
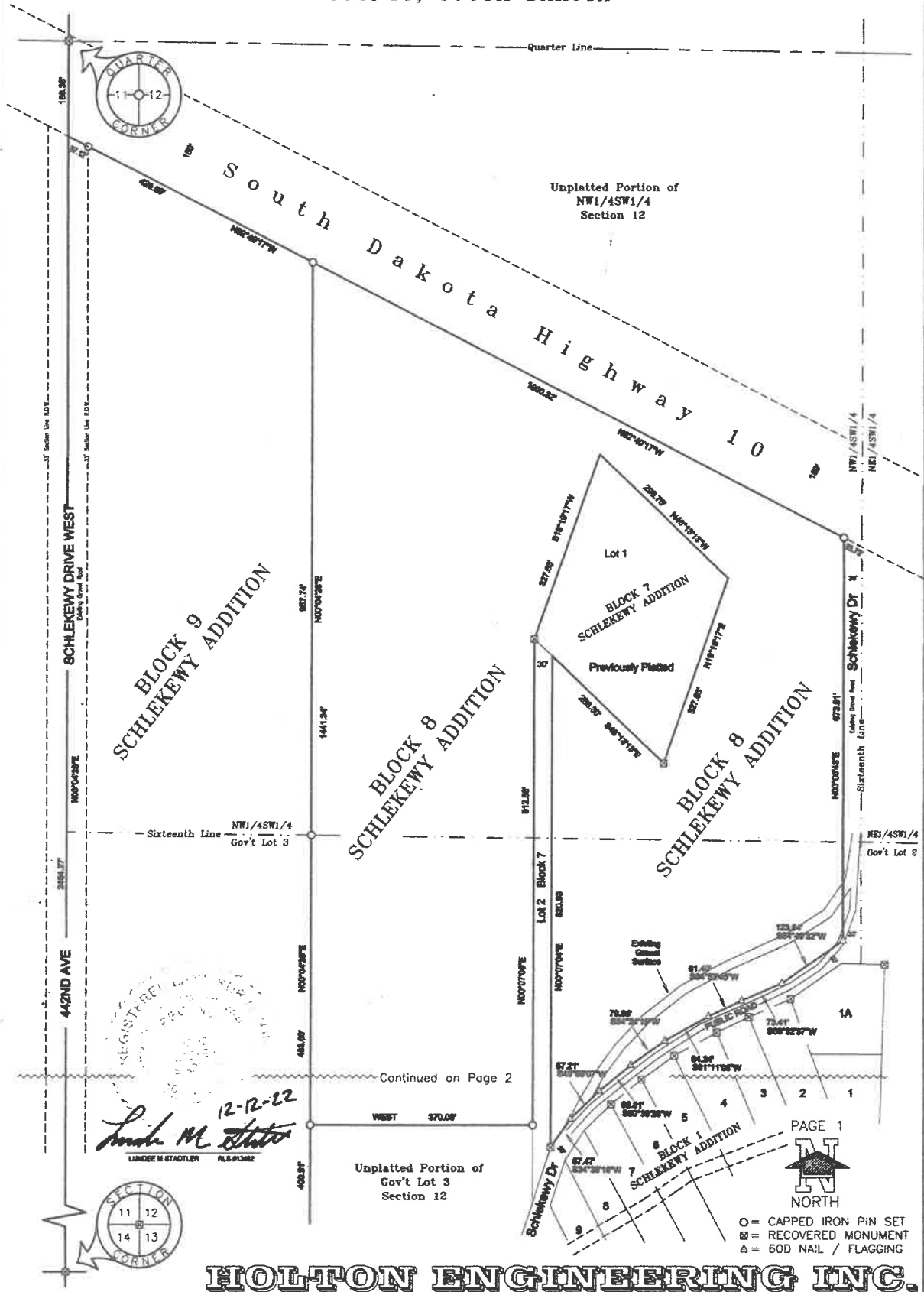


PLAT OF

BLOCKS 8 AND 9 IN SCHLEKEWY ADDITION IN GOV'T LOT 3 AND THE  
 NW1/4SW1/4 OF SECTION 12, T126N, R54W OF THE 5TH P.M., MARSHALL  
 COUNTY, SOUTH DAKOTA



BLOCK 9  
 SCHLEKEWY ADDITION

BLOCK 8  
 SCHLEKEWY ADDITION

BLOCK 8  
 SCHLEKEWY ADDITION

BLOCK 1  
 SCHLEKEWY ADDITION



12-12-22  
 Linda M. Stotter

Continued on Page 2



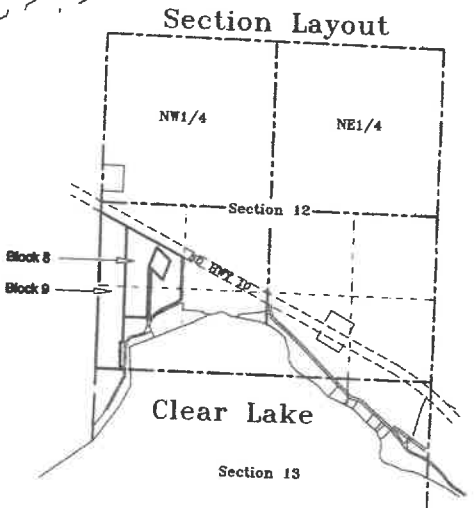
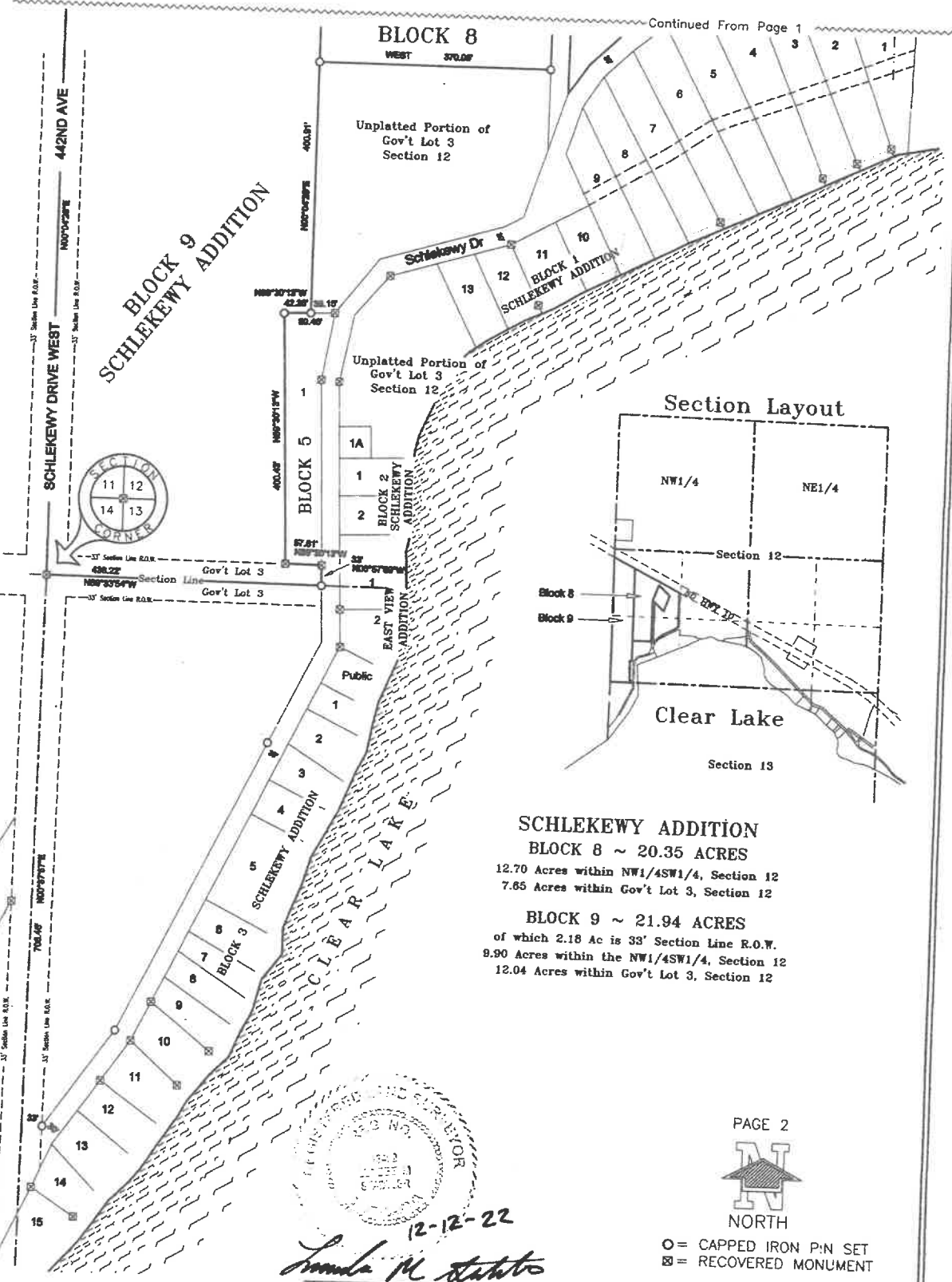
- = CAPPED IRON PIN SET
- ⊗ = RECOVERED MONUMENT
- △ = 60D NAIL / FLAGGING

**HOLTON ENGINEERING INC.**

PLAT OF

BLOCKS 8 AND 9 IN SCHLEKEWY ADDITION IN GOV'T LOT 3 AND THE NW1/4SW1/4 OF SECTION 12, T126N, R54W OF THE 5TH P.M., MARSHALL COUNTY, SOUTH DAKOTA

Continued From Page 1



**SCHLEKEWY ADDITION**  
 BLOCK 8 ~ 20.35 ACRES  
 12.70 Acres within NW1/4SW1/4, Section 12  
 7.65 Acres within Gov't Lot 3, Section 12  
 BLOCK 9 ~ 21.94 ACRES  
 of which 2.18 Ac is 33' Section Line R.O.W.  
 8.90 Acres within the NW1/4SW1/4, Section 12  
 12.04 Acres within Gov't Lot 3, Section 12



12-12-22

*Amanda M. Statuto*  
 LAND SURVEYOR

PAGE 2



○ = CAPPED IRON P-IN SET  
 ☒ = RECOVERED MONUMENT

**HOLTON ENGINEERING INC.**

DRAWN: 12/5/22 FIELD: 12/2/22 128 E HICKORY ST Sisseton, SD PH. 1-605-698-3850 1212654-P721