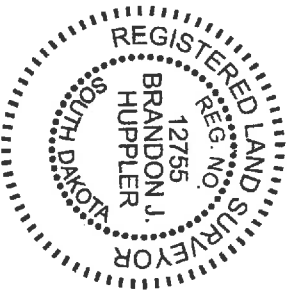


**PLAT OF:**

**JIM JOHNSON ADDITION  
IN THE COUNTY OF MARSHALL, SOUTH DAKOTA**  
LOCATED IN THE SOUTHEAST QUARTER (SE 1/4) OF SECTION 26, T125N,  
R53W OF THE 5th P.M., MARSHALL COUNTY, SOUTH DAKOTA  
CONTAINING 15.28 ACRES, MORE OR LESS, OF WHICH 0.95 ACRE,  
MORE OR LESS, IS SECTION LINE RIGHT OF WAY  
Sheet 1 of 3

SURVEYED & PREPARED BY:

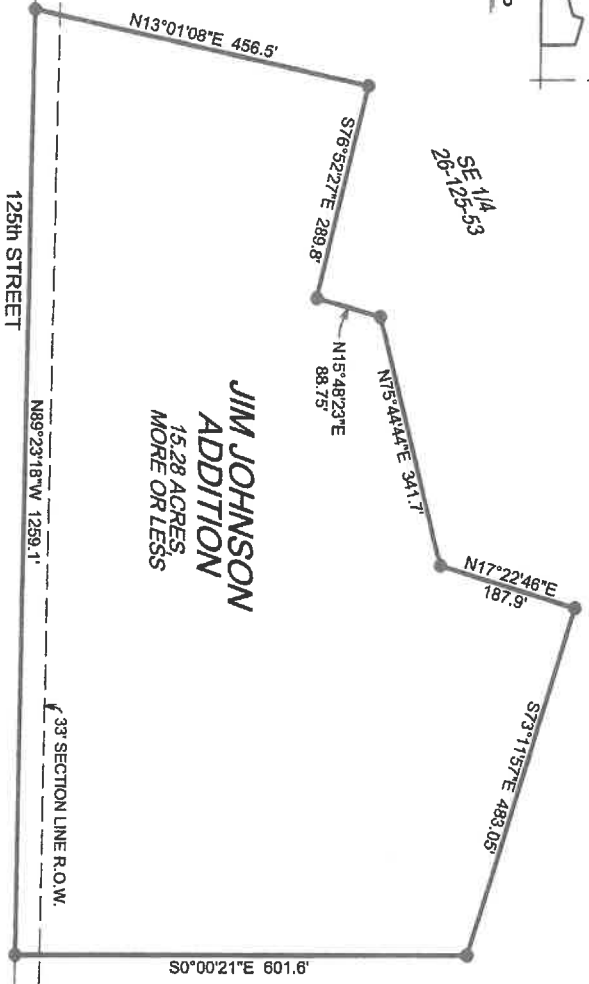
*Brandon J. Huppeler*  
REGISTERED LAND SURVEYOR



SCALE 1"=200'  
AUGUST 2022  
● CAPPED IRON PIN SET  
LS#12755  
○ RECOVERED MONUMENT



17276 44th Ave.  
Watson, S.D. 57201  
Brandon Huppeler Danah Brinkman  
Cell: (605) 520-5038 Cell: (605) 891-7259  
Email: brandon@huppelerlandsurvey.com  
Project Number: 22-104 Date: 08/20/22





**RESOLUTION BY THE BOARD OF MARSHALL COUNTY PLAN COMMISSION**

On motion made and carried the following was adopted: "Be it resolved by the County Plan Commission of Marshall County, South Dakota in regular session that the plat of "JIM JOHNSON ADDITION IN THE COUNTY OF MARSHALL, SOUTH DAKOTA, Located in the Southeast Quarter (SE1/4) of Section 26, T125N, R53W of the 5<sup>th</sup> P.M., Marshall County, South Dakota", be approved this \_\_\_\_\_ day of \_\_\_\_\_, 2022 in accordance with the provisions of SDCL Chapter 11-2-2 and all acts amendatory thereto." I \_\_\_\_\_, Chairman Marshall County Plan Commission certify that the foregoing is a true copy of the resolution adopted by the Board of Marshall County Plan Commission at a meeting of the board held on this \_\_\_\_\_ day of \_\_\_\_\_, 2022.

\_\_\_\_\_  
Chairman Marshall County  
Plan Commission

**RESOLUTION BY THE BOARD OF COUNTY COMMISSION MARSHALL COUNTY SOUTH DAKOTA**

On motion made and carried the following resolution was adopted: "Be it resolved by the Board of County Commissioners of Marshall County, South Dakota in regular meeting assembled that the plat of "JIM JOHNSON ADDITION IN THE COUNTY OF MARSHALL, SOUTH DAKOTA, Located in the Southeast Quarter (SE1/4) of Section 26, T125N, R53W of the 5<sup>th</sup> P.M., Marshall County, South Dakota", be approved this \_\_\_\_\_ day of \_\_\_\_\_, 2022 in accordance with the provisions of SDCL 11-3 and all acts amendatory thereto." I \_\_\_\_\_, County Auditor of Marshall County, certify that this is a true copy of the resolution adopted by the Board of Commissioners of Marshall County, South Dakota.

Dated this \_\_\_\_\_ day of \_\_\_\_\_, 2022.

\_\_\_\_\_  
County Auditor, Marshall County,  
South Dakota

**TREASURER'S CERTIFICATE**

I, \_\_\_\_\_, Treasurer of Marshall County, South Dakota, certify that all taxes which are liens upon the land included in the attached plat are shown by my records to be fully paid.

Dated this \_\_\_\_\_ day of \_\_\_\_\_, 2022.

\_\_\_\_\_  
Treasurer, Marshall County, South Dakota

**DIRECTOR OF EQUALIZATION CERTIFICATE**

I, \_\_\_\_\_, Director of Equalization, Marshall County, South Dakota certify that I have received a copy of the attached plat as to be filed.

Dated this \_\_\_\_\_ day of \_\_\_\_\_, 2022.

\_\_\_\_\_  
Director of Equalization,  
Marshall County, South Dakota

**REGISTER OF DEED'S CERTIFICATE**

I, \_\_\_\_\_, Register of Deeds, Marshall County, South Dakota certify that I have received the original copy of the attached plat on this \_\_\_\_\_ day of \_\_\_\_\_, 2022 at \_\_\_\_ O'clock \_\_\_\_ M. and duly recorded in \_\_\_\_\_ Page \_\_\_\_\_.

\_\_\_\_\_  
Register of Deeds,  
Marshall County, South Dakota

**BRINKMAN  
LAND SURVEYING**  
17275 449th Ave.  
Wasson, S.D. 57201  
Brandon Huppier    Darwin Brinkman  
Cell: (605) 820-5526    Cell: (605) 881-7259  
Email: Brandon.Huppier@icloud.com  
Project Number: 22-494    Date: 8/4/2022