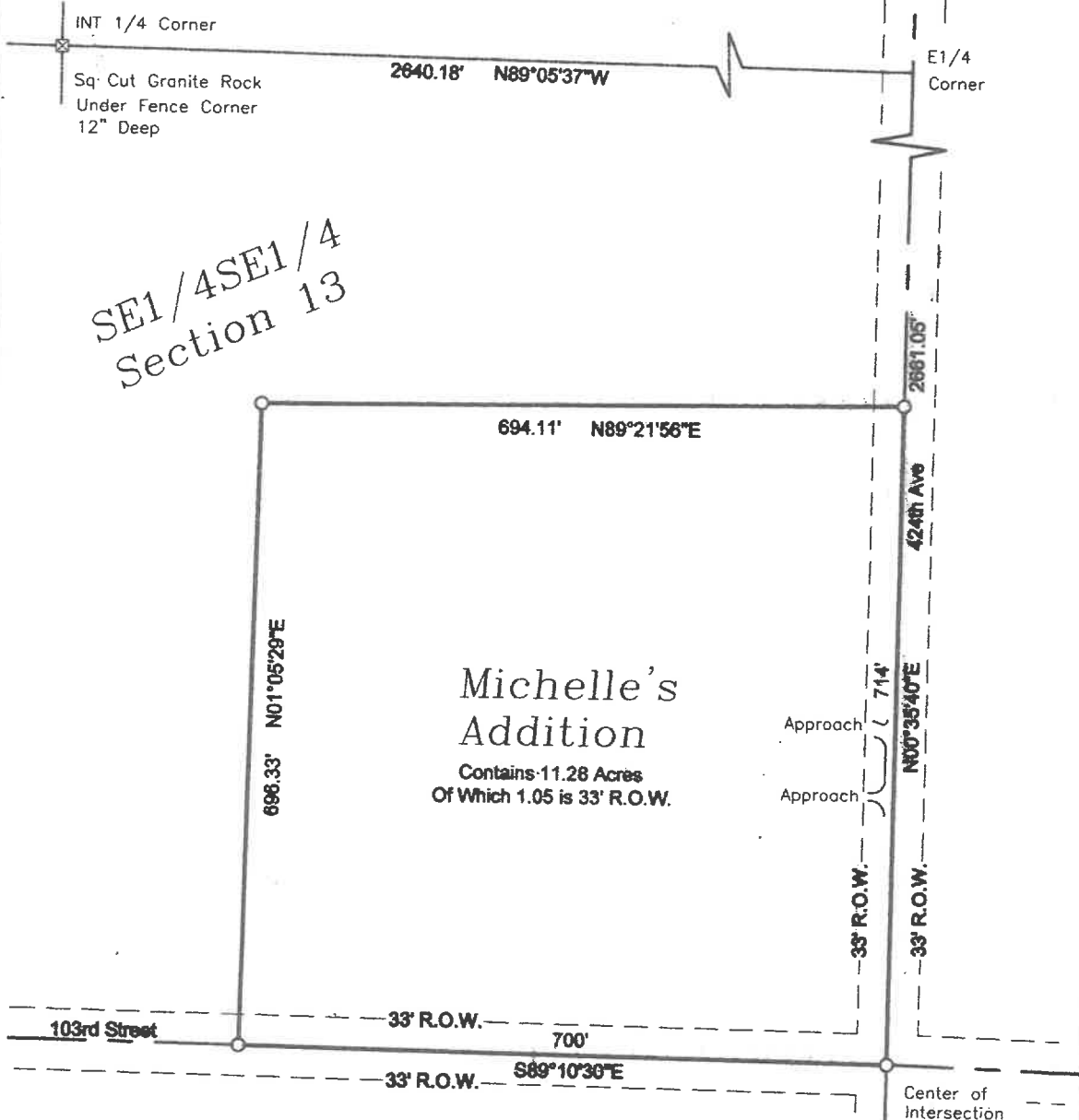


Plat of
Michelle's Addition
 in the SE1/4SE1/4 of Section 13,
 T128N, R58W of the 5th P.M.,
 Marshall County, South Dakota

SE1/4SE1/4
 Section 13

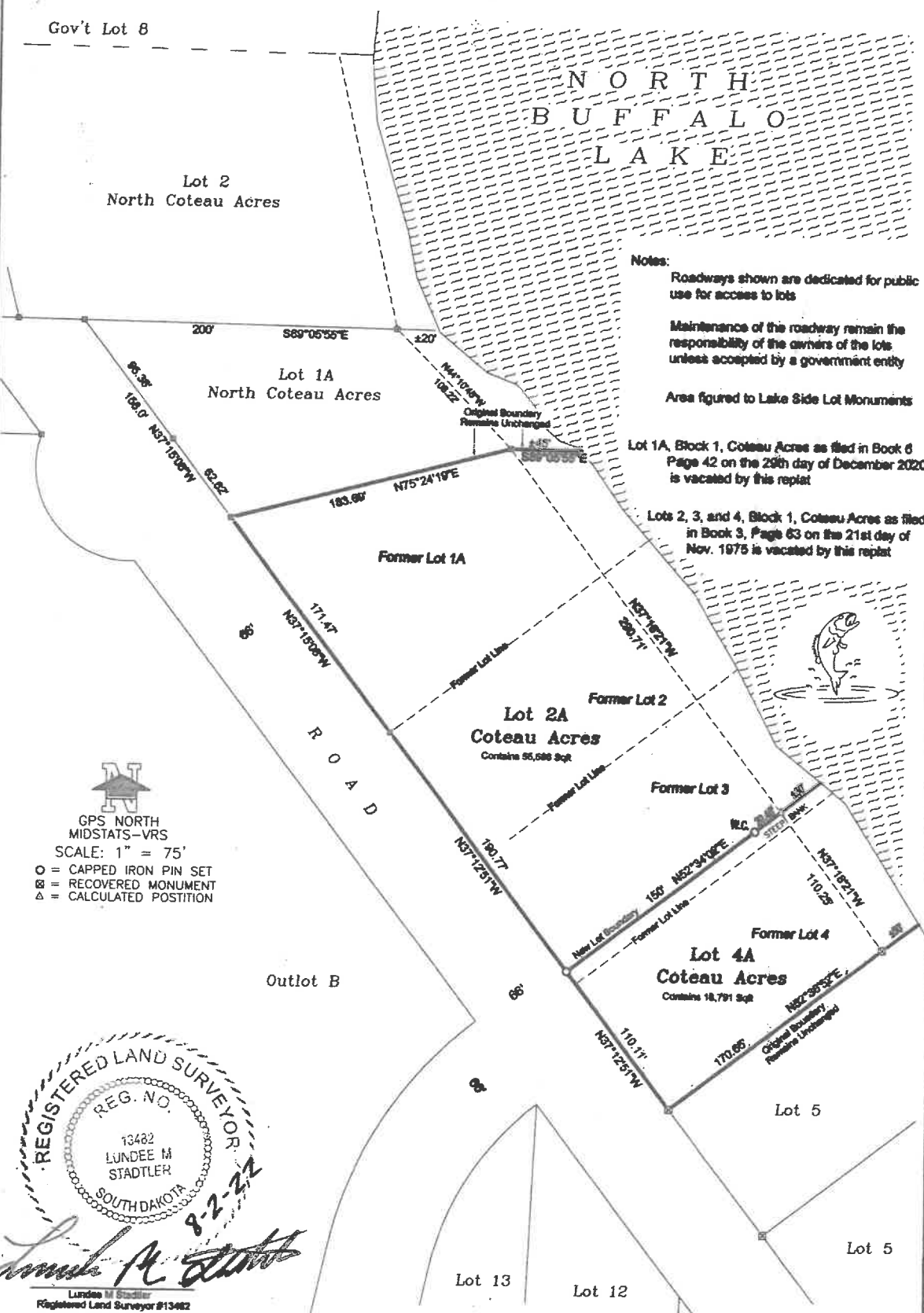


SCALE: 1" = 150'

- = CAPPED IRON PIN SET
- ⊗ = RECOVERED MONUMENT

HOLTON ENGINEERING INC.

PLAT OF
 LOT 2A & 4A, BLOCK 1, COTEAU ACRES
 IN GOV'T LOT 9 IN SECTION 4,
 T125N, R53W OF THE 5TH P.M.,
 MARSHALL COUNTY, SOUTH DAKOTA



Notes:
 Roadways shown are dedicated for public use for access to lots
 Maintenance of the roadway remain the responsibility of the owners of the lots unless accepted by a government entity
 Area figured to Lake Side Lot Monuments

Lot 1A, Block 1, Coteau Acres as filed in Book 6 Page 42 on the 29th day of December 2020 is vacated by this replat

Lots 2, 3, and 4, Block 1, Coteau Acres as filed in Book 3, Page 63 on the 21st day of Nov. 1975 is vacated by this replat



GPS NORTH
 MIDSTATS-VRS
 SCALE: 1" = 75'
 ○ = CAPPED IRON PIN SET
 ⊠ = RECOVERED MONUMENT
 △ = CALCULATED POSITION

REGISTERED LAND SURVEYOR
 REG. NO. 13482
 LUNDEE M STADTLER
 SOUTH DAKOTA
 8-2-22

Lundee M Stadler
 Lundee M Stadler
 Registered Land Surveyor #13482

HOLTON ENGINEERING INC.