

SECTION LINE

1/16th Corner  
in Water

Hove Addition

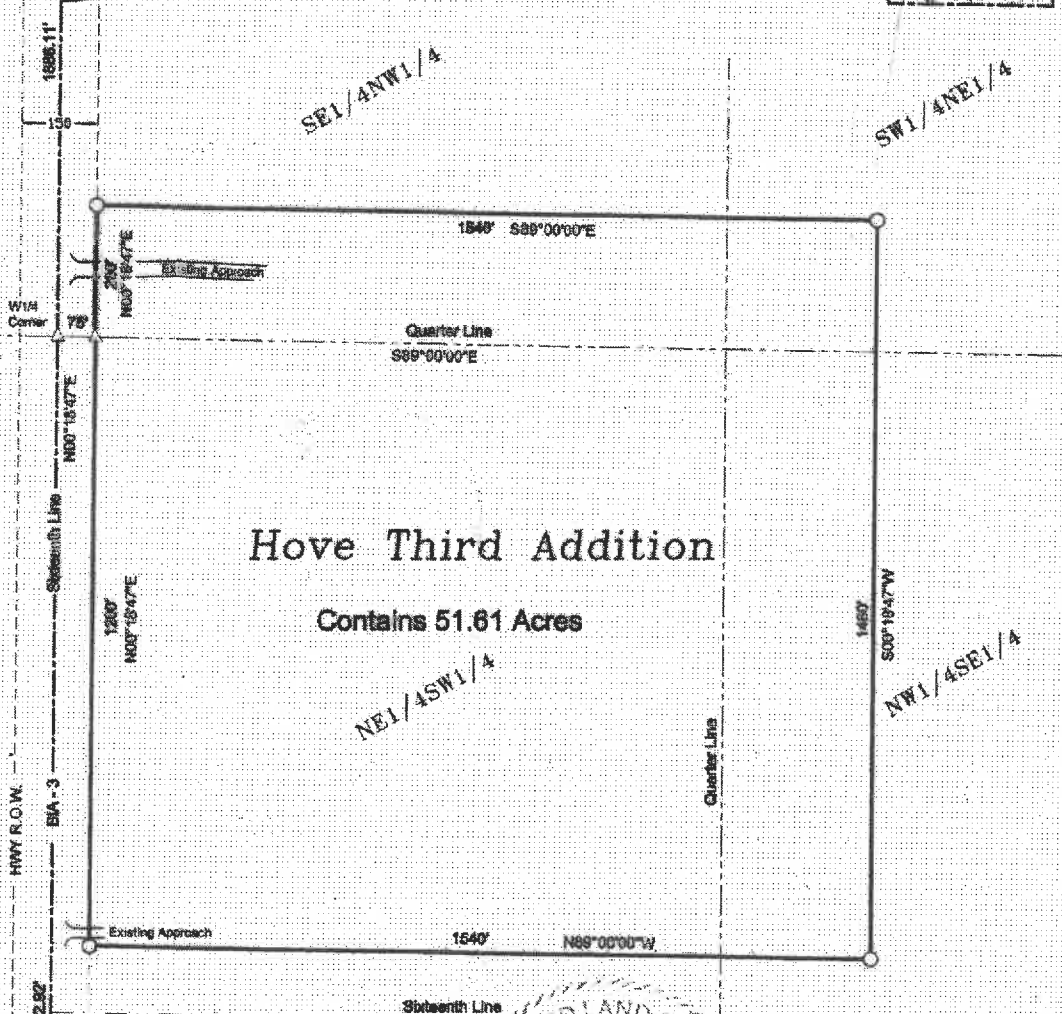
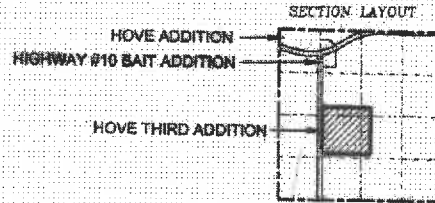
Plat of:

# HOVE THIRD ADDITION

located in the SE1/4NW1/4, SW1/4NE1/4, NW1/4SE1/4,  
and the NE1/4SW1/4 of Section 35, T186N, R53W  
Of the 5th P.M, Marshall County, South Dakota

HIGHWAY #10 BATT  
ADDITION

GREAT PLAINS REGIONAL  
OFFICE LAND TITLES & RECORDS  
DOC. 347 14737 BUFFALO LAKE  
ROAD PROJECT 3 1-1



## Hove Third Addition

Contains 51.61 Acres

ACREAGE	
HOVE THIRD ADDITION	51.61 ACRES
IN THE SE1/4NW1/4	7.43 ACRES
IN THE SW1/4NE1/4	1.78 ACRES
IN THE NW1/4SE1/4	8.12 ACRES
IN THE NE1/4SW1/4	34.30 ACRES



GPS-NORTH

SCALE: 1" = 300'

- = CAPPED IRON PIN SET
- ⊠ = RECOVERED MONUMENT
- △ = CALCULATED POSITION

*Lunde M. Stadler*

LUNDEE M. STADLER RLS #13482

### HOLTON ENGINEERING INC.

**OWNER'S CERTIFICATE**

WE, THE UNDERSIGNED, HEREBY CERTIFY THAT WE ARE THE ABSOLUTE AND UNQUALIFIED OWNER(S) OF THE SE1/4NW1/4, SW1/4NE1/4, NW1/4SE1/4, AND THE NE1/4SW1/4 OF SECTION 35, T126N, R53W OF THE 5TH P.M., MARSHALL COUNTY, SOUTH DAKOTA, WE FURTHER CERTIFY THAT THE ABOVE DESCRIBED PROPERTY WAS SURVEYED AND PLATTED AT OUR REQUEST AND UNDER OUR DIRECTION AND THAT THE DEVELOPMENT OF THIS LAND SHALL CONFORM TO ALL EXISTING APPLICABLE ZONING, SUBDIVISION AND EROSION AND SEDIMENT CONTROL REGULATIONS. SAID PROPERTY AS SURVEYED AND PLATTED SHALL BE HEREAFTER KNOWN AS HOVE THIRD ADDITION LOCATED IN THE SE1/4NW1/4, SW1/4NE1/4, NW1/4SE1/4, AND THE NE1/4SW1/4 OF SECTION 35, 126N, R53W OF THE 5TH P.M., MARSHALL COUNTY, SOUTH DAKOTA.

DATED THIS 13 DAY OF Jan, 2022

Calvin Hove  
CALVIN HOVE

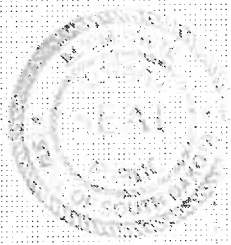
Vivian Hove  
VIVIAN HOVE

**ACKNOWLEDGMENT**

STATE OF SD

COUNTY OF Roberts

ON THIS 13<sup>th</sup> DAY OF Jan, 2022, PERSONALLY APPEARED CALVIN HOVE & VIVIAN HOVE WHO SATISFACTORILY PROVEN TO BE THE PERSON(S) WHOSE NAME INSCRIBED TO THE WITHIN INSTRUMENT AND ACKNOWLEDGED TO ME THAT THEY EXECUTED THE SAME.



Alisa White  
MY COMMISSION EXPIRES: 9-27-2025

**SURVEYOR'S CERTIFICATE**

I, LUNDEE M STADTLER, A REGISTERED LAND SURVEYOR IN THE STATE OF SOUTH DAKOTA DO HEREBY CERTIFY THAT AT THE REQUEST OF THE OWNER(S), I HAVE SUPERVISED THE SURVEYING AND PLATTING OF HOVE THIRD ADDITION LOCATED IN THE SE1/4NW1/4, SW1/4NE1/4, NW1/4SE1/4, AND THE NE1/4SW1/4 OF SECTION 35, 126N, R53W OF THE 5TH P.M., MARSHALL COUNTY, SOUTH DAKOTA AS SHOWN ON THE ATTACHED PLAT AND THAT I HAVE SUPERVISED THE SETTING OF IRON PINS WITH CAPS AS SHOWN AND THAT SAID SURVEY AND PLAT ARE TRUE AND CORRECT

DATED THIS 28<sup>th</sup> DAY OF January, 2022

Lundee M Stadler  
LUNDEE M STADTLER RLS #13482

**HOLTON ENGINEERING INC**

RESOLUTION BY THE BOARD OF MARSHALL COUNTY PLAN COMMISSION

ON MOTION MADE AND CARRIED THE FOLLOWING WAS ADOPTED: "BE IT RESOLVED BY THE COUNTY PLAN COMMISSION OF MARSHALL COUNTY, SOUTH DAKOTA IN REGULAR SESSION THAT THE PLAT OF HOVE THIRD ADDITION LOCATED IN THE SE1/4NW1/4, SW1/4NE1/4, NW1/4SE1/4, AND THE NE1/4SW1/4 OF SECTION 35, 126N, R53W OF THE 5TH P.M., MARSHALL COUNTY, SOUTH DAKOTA BE APPROVED THIS \_\_\_ DAY OF \_\_\_\_\_, 20\_\_\_ IN ACCORDANCE WITH THE PROVISIONS OF SDCL CHAPTER 11-2-2 AND ALL ACTS AMENDATORY THERETO." I \_\_\_\_\_, CHAIRMAN MARSHALL COUNTY PLAN COMMISSION CERTIFY THAT THE FOREGOING IS A TRUE COPY OF THE RESOLUTION ADOPTED BY THE BOARD OF MARSHALL COUNTY PLAN COMMISSION AT A MEETING OF THE BOARD HELD ON THIS \_\_\_ DAY OF \_\_\_\_\_, 20\_\_\_.

\_\_\_\_\_  
CHAIRMAN MARSHALL COUNTY PLAN COMMISSION

RESOLUTION BY THE BOARD OF COUNTY COMMISSION MARSHALL COUNTY SOUTH DAKOTA

ON MOTION MADE AND CARRIED THE FOLLOWING RESOLUTION WAS ADOPTED: "BE IT RESOLVED BY THE BOARD OF COUNTY COMMISSIONERS OF MARSHALL COUNTY, SOUTH DAKOTA IN REGULAR MEETING ASSEMBLED THAT THE PLAT OF HOVE THIRD ADDITION LOCATED IN THE SE1/4NW1/4, SW1/4NE1/4, NW1/4SE1/4, AND THE NE1/4SW1/4 OF SECTION 35, 126N, R53W OF THE 5TH P.M., MARSHALL COUNTY, SOUTH DAKOTA BE APPROVED THIS \_\_\_ DAY OF \_\_\_\_\_, 20\_\_\_ IN ACCORDANCE WITH THE PROVISIONS OF SDCL 11-3 AND ALL ACTS AMENDATORY THERETO." I \_\_\_\_\_, COUNTY AUDITOR OF MARSHALL COUNTY, CERTIFY THAT THIS IS A TRUE COPY OF THE RESOLUTION ADOPTED BY THE BOARD OF COMMISSIONERS OF MARSHALL COUNTY, SOUTH DAKOTA.

DATED THIS \_\_\_ DAY OF \_\_\_\_\_, 20\_\_\_

\_\_\_\_\_  
COUNTY AUDITOR, MARSHALL COUNTY, SOUTH DAKOTA

HIGHWAY CERTIFICATE

I, Alvah Quinn Jr, BIA ROADS SUPERINTENDENT, CERTIFY THAT I HAVE REVIEWED THE ATTACHED PLAT, AND APPROVE OF IN-PLACE ACCESS ROAD(S) ONTO THE RIGHT-OF-WAY FOR BIA 3.

DATED THIS 31 DAY OF Jan, 2023

Alvah Quinn Jr

\_\_\_\_\_  
BIA ROADS SUPERINTENDENT

DIRECTOR OF EQUALIZATION'S CERTIFICATE

I, \_\_\_\_\_, DIRECTOR OF EQUALIZATION, MARSHALL COUNTY, SOUTH DAKOTA CERTIFY THAT I HAVE RECEIVED A COPY OF THE ATTACHED PLAT AS TO BE FILED.

DATED THIS \_\_\_ DAY OF \_\_\_\_\_, 20\_\_\_

\_\_\_\_\_  
DIRECTOR OF EQUALIZATION, MARSHALL COUNTY, SOUTH DAKOTA

TREASURER'S CERTIFICATE

I, \_\_\_\_\_, TREASURER OF MARSHALL COUNTY, SOUTH DAKOTA CERTIFY THAT ALL TAXES WHICH ARE LIENS UPON THE LAND INCLUDED IN THE ATTACHED PLAT ARE SHOWN BY MY RECORDS TO BE FULLY PAID.

DATED THIS \_\_\_ DAY OF \_\_\_\_\_, 20\_\_\_

\_\_\_\_\_  
COUNTY TREASURER, MARSHALL COUNTY, SOUTH DAKOTA

REGISTER OF DEED'S CERTIFICATE

I, \_\_\_\_\_, REGISTER OF DEEDS, MARSHALL COUNTY, SOUTH DAKOTA CERTIFY THAT I HAVE RECEIVED THE ORIGINAL COPY OF THE ATTACHED PLAT ON THIS \_\_\_ DAY OF \_\_\_\_\_, 20\_\_\_ AT \_\_\_\_\_ O'CLOCK \_\_\_ M. AND DULY RECORDED IN \_\_\_\_\_ PAGE \_\_\_\_\_

\_\_\_\_\_  
REGISTER OF DEEDS, MARSHALL COUNTY, SOUTH DAKOTA

**HOLTON ENGINEERING INC**