

PLAT OF

QUAMEN FARM BUILDING ADDITION

LOCATED IN THE NW1/4 OF SECTION 26,
T128N, R57W OF THE 5TH P.M.,
MARSHALL COUNTY, SOUTH DAKOTA

104TH STREET
MARSHALL COUNTY #1



428TH AVE
1137.0'

508.87' N102°40'E

33' R.O.W.

994.98'

33' R.O.W.

2640.85'

33'

395.0' East

33'

508.87' N102°40'E

33' R.O.W.

994.98'

33' R.O.W.

2640.85'

33'

994.98'

33' R.O.W.

994.98'

33' R.O.W.

994.98'

33' R.O.W.

994.98'

33' R.O.W.

994.98'

33' R.O.W.

994.98'

33' R.O.W.

994.98'

33' R.O.W.

994.98'

33' R.O.W.

994.98'

33' R.O.W.

994.98'

33' R.O.W.



653' S88°27'07"E

214' North

363.44'

Quamen Farm
Building Addition

Contains 15.0 Acres
Of Which 0.99 is R.O.W.

261.5' South

NW1/4

998.29' West

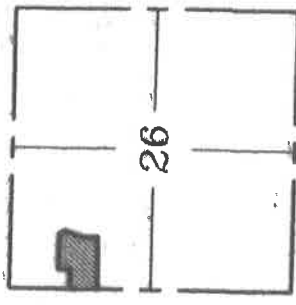
957.29'

1200.0' S28°22'10"E

360.0' S20°06'26"W

Wild Rice Creek

SECTION LAYOUT



SCALE: 1" = 250'

O = CAPPED IRON PIN SET

☒ = RECOVERED MONUMENT



Lundee M. Stadler
LUNDEE M. STADLER
R.L.S. #1242

HOLLTON ENGINEERING INC.