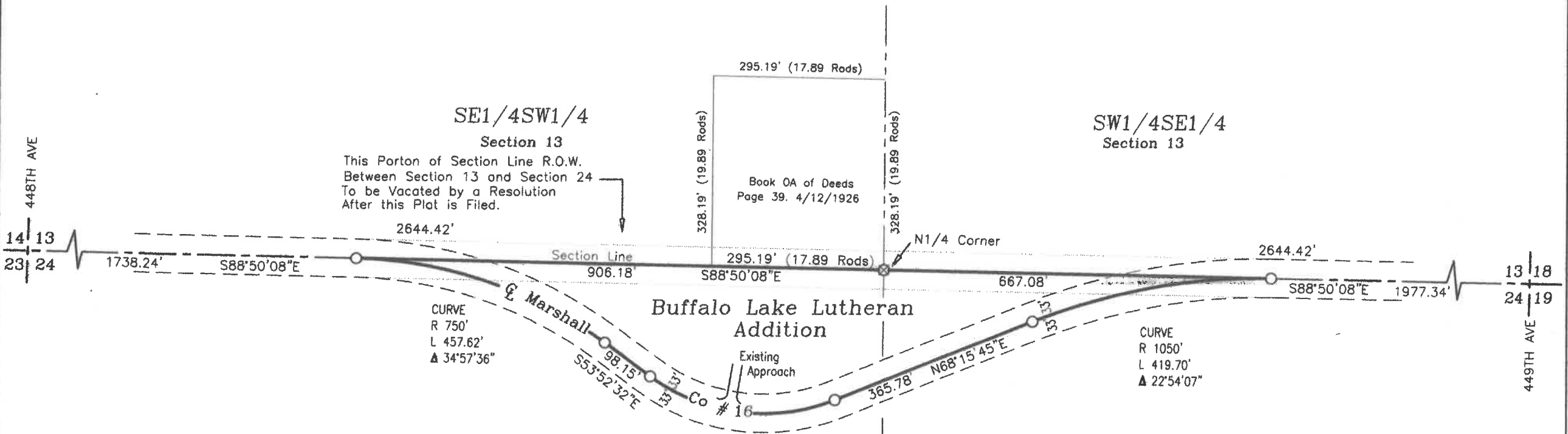


PLAT OF  
 BUFFALO LAKE LUTHERAN ADDITION  
 IN THE NE1/4NW1/4 AND THE NW1/4NE1/4 OF  
 SECTION 24, T125N, R53W OF THE 5TH P.M.,  
 MARSHALL COUNTY, SOUTH DAKOTA



Acreage	
Buffalo Lake Lutheran Add	3.90 Acres
in the NE1/4NW1/4	2.84 Acres
in the NW1/4NE1/4	1.06 Acres
33' R.O.W. inside Buffalo Lake Luth. Add for Marshall Co # 16 Road	0.81 Acres
33' R.O.W. in the NW1/4 Sec. 24 not including 33' Section Line R.O.W for Marshall Co # 16 Road	0.62 Acres
33' R.O.W. in the NE1/4 Sec. 24 not including 33' Section Line R.O.W for Marshall Co # 16 Road	0.40 Acres

REGISTERED LAND SURVEYOR  
 REG. NO. 13482  
 LUNDEE M STADTLER  
 SOUTH DAKOTA 10-28-21  
 LUNDEE M STADTLER RLS #13482



SCALE: 1" = 200'  
 ⊗ = CAPPED IRON PIN SET  
 ○ = SET 60D NAIL 4" BELOW GRAVEL W/ RIBBON  
 ⊠ = RECOVERED MONUMENT

**HOLTON ENGINEERING INC.**