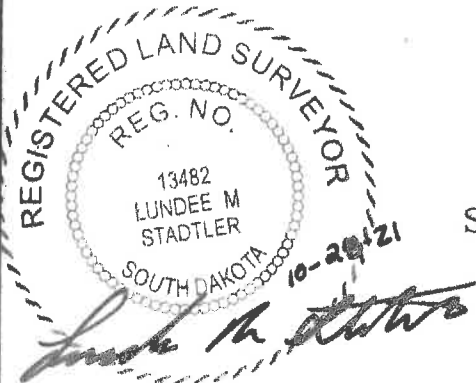


Plat of

Lot 1, Anderson's Roy Lake Addition
 in NW1/4 of Section 21, T126N, R55W of the 5th P.M.,
 Marshall County, South Dakota

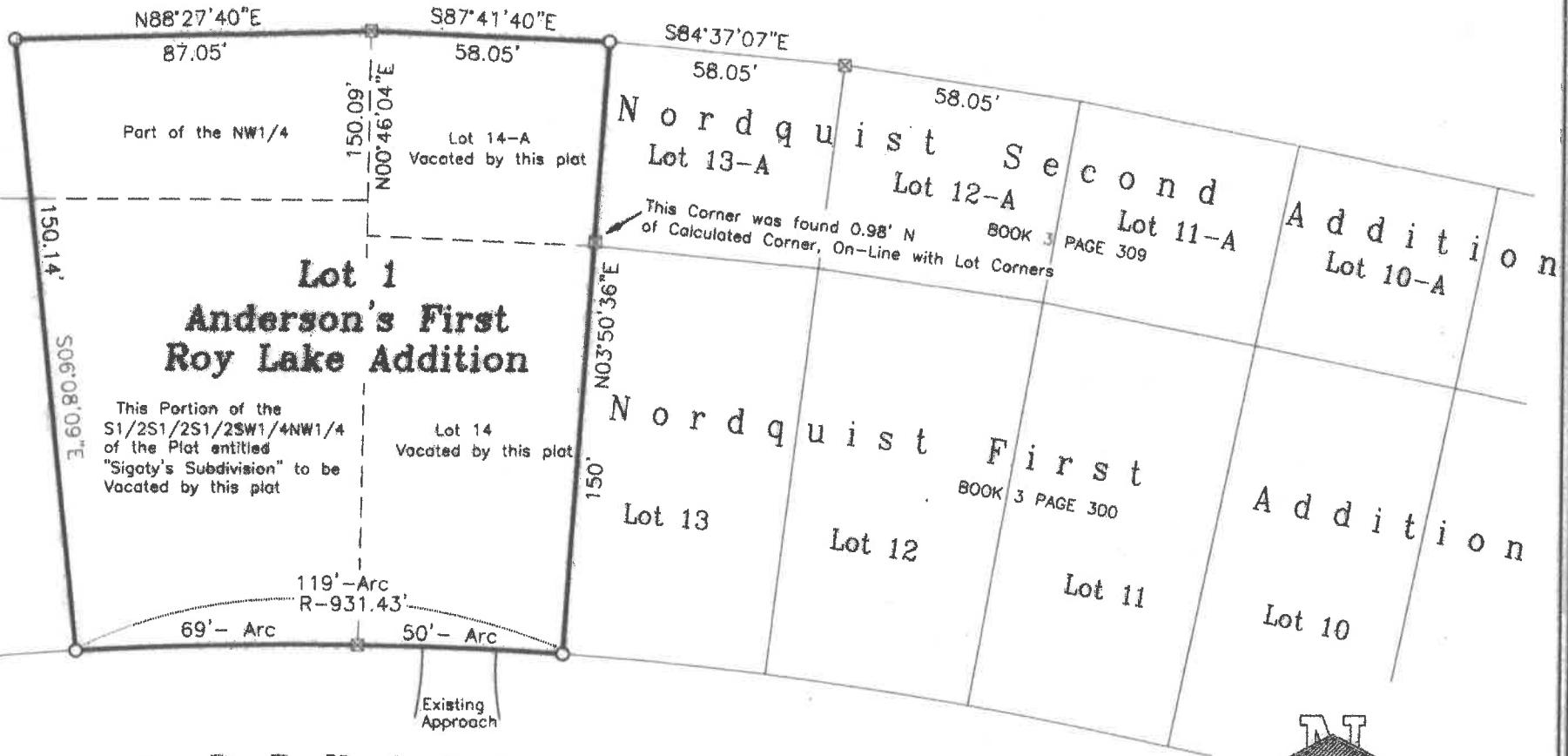


NW1/4
 Section 21

S1/2S1/2S1/2SW1/4NW1/4

BOOK 3 PAGE 239

Sigaty's Subdivision



This Plat Shall Vacate:

A Portion of the S1/2S1/2S1/2SW1/4NW1/4 of the Plat entitled "Sigaty's Subdivision Located in Section 21, T126N, R55W of the 5th P.M., Marshall County, South Dakota" as filed in Book 3 Page 239 on May 17th, 1990.

Lot 14, Nordquist First Addition in the NW1/4 and Gov't Lot 3, Section 21, T126N, R55W of the 5th P.M. in the County of Marshall, South Dakota as filed in Book 3 Page 300 on July 31st, 1996

Lot 14A, Nordquist Second Addition in the NW1/4 of Section 21, T126N, R55W of the 5th P.M. in the County of Marshall, South Dakota as filed in Book 3 Page 309 on August 29th, 1997

This Plat contains unplatted land within the NW1/4 of Section 21, T126N, R55W of the 5th P.M., Marshall County, South Dakota

LOT 1, ANDERSON ROY LAKE ADDITION	0.45 AC (19,750 SQFT)
In the NW1/4	0.08 AC (3403 SQFT)
In S1/2S1/2S1/2SW1/4NW1/4, Sigaty's Sub.	0.19 AC (8256 SQFT)
In Lot 14, Nordquist First Addition	0.12 AC (5254 SQFT)
In Lot 14-A, Nordquist Second Addition	0.06 AC (2637 SQFT)



SCALE: 1" = 40'

- = CAPPED IRON PIN SET ORANGE CAP "STADLER LSNO. 13482"
- ⊗ = RECOVERED MONUMENT "AASON LS 3426"

HOLTON ENGINEERING INC.