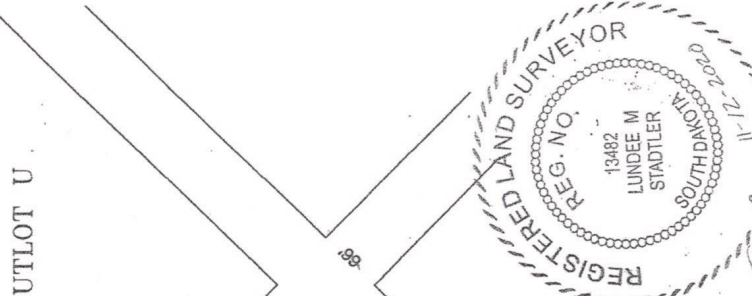
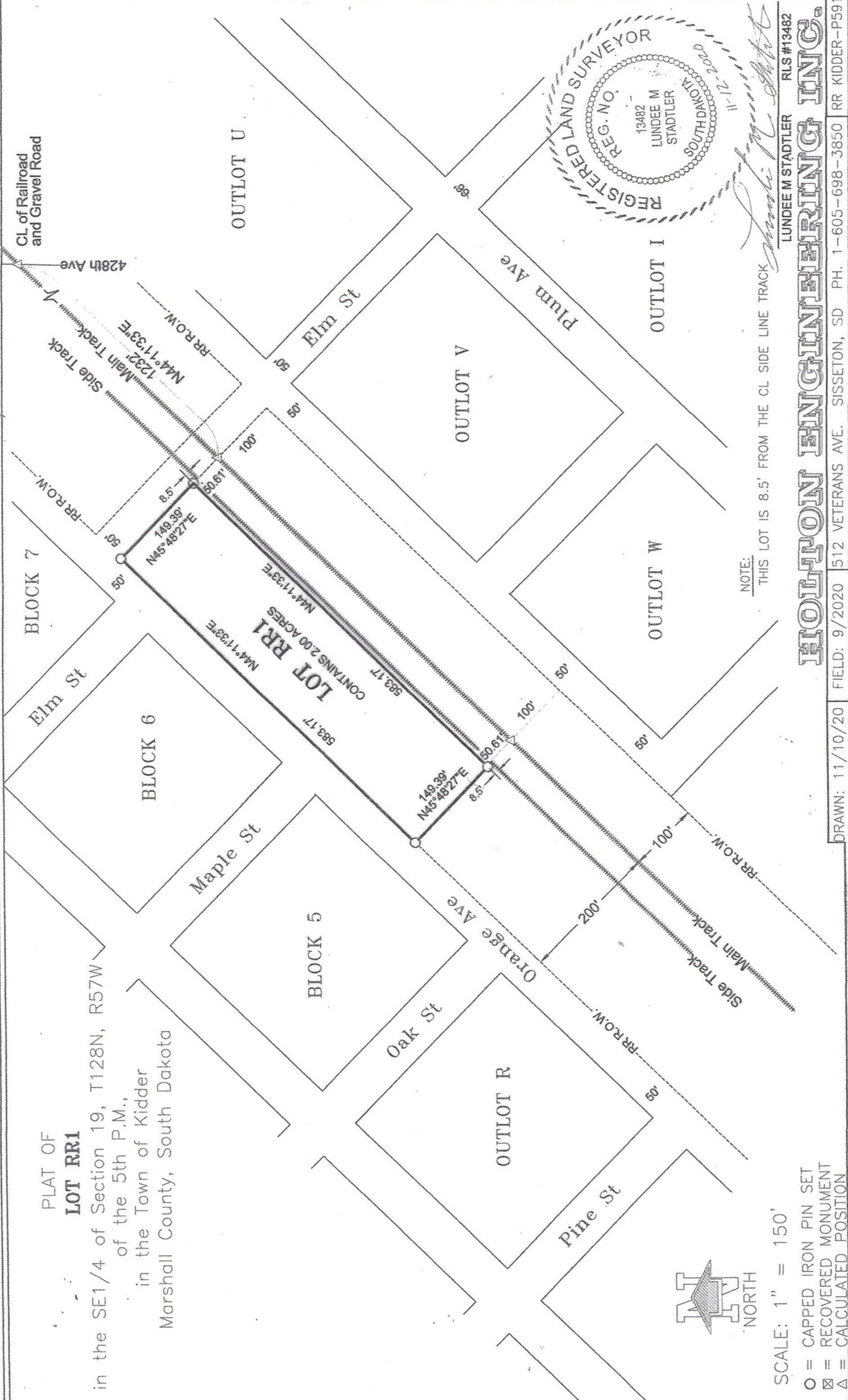


PLAT OF
LOT RR1

in the SE1/4 of Section 19, T128N, R57W
of the 5th P.M.,
in the Town of Kidder
Marshall County, South Dakota



NOTE: THIS LOT IS 8.5' FROM THE CL SIDE LINE TRACK

SCALE: 1" = 150'

- O = CAPPED IRON PIN SET
- ⊠ = RECOVERED MONUMENT
- △ = CALCULATED POSITION

LUNDEE M STADLER RLS #13482

HOLTON ENGINEERING INC.

DRAWN: 11/10/20 FIELD: 9/2020 512 VETERANS AVE. SISSETON, SD PH. 1-605-698-3850 RR KIDDER-P591