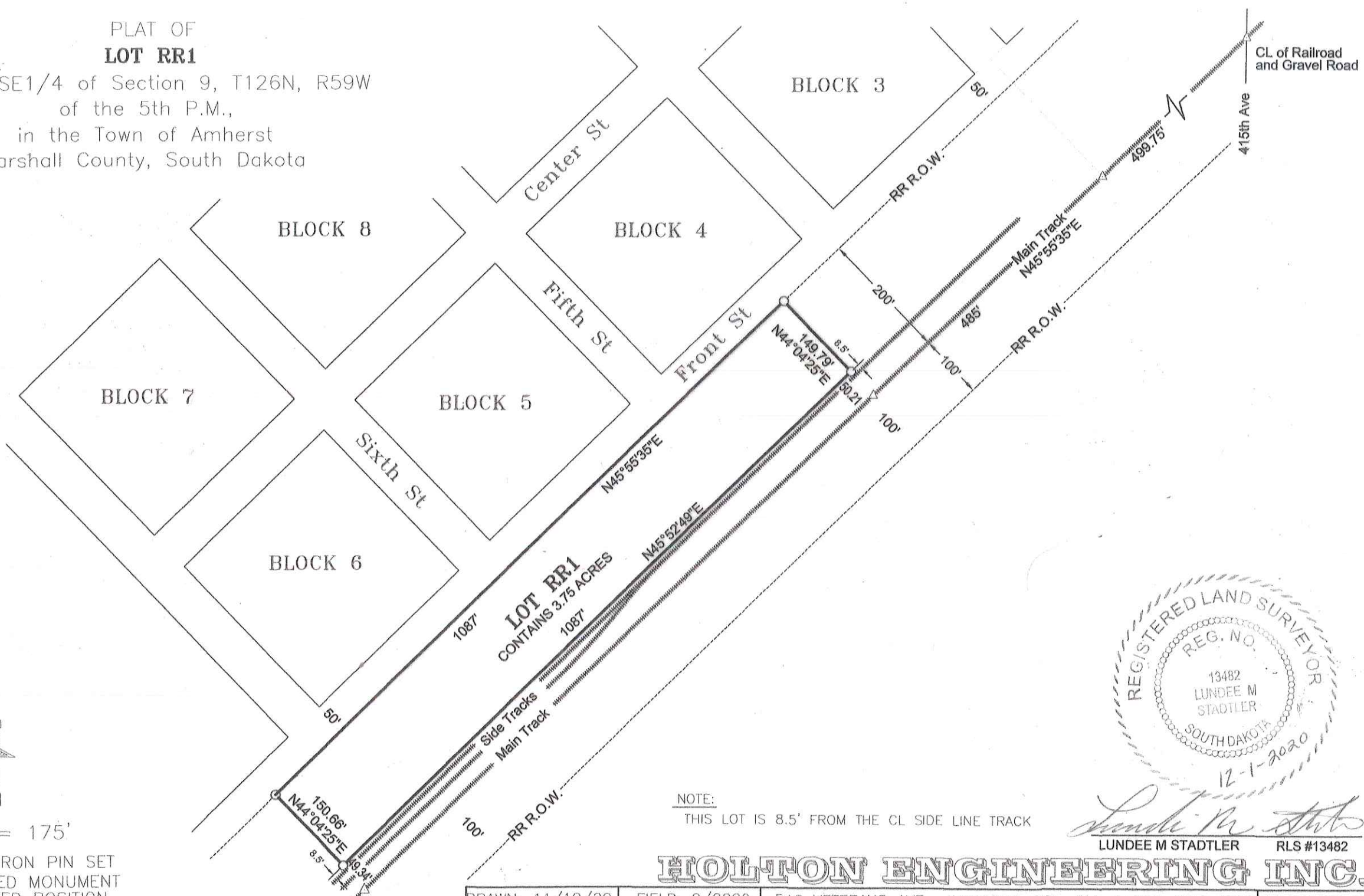


PLAT OF
LOT RR1

in the SE1/4 of Section 9, T126N, R59W
of the 5th P.M.,
in the Town of Amherst
Marshall County, South Dakota



SCALE: 1" = 175'

- = CAPPED IRON PIN SET
- ⊠ = RECOVERED MONUMENT
- △ = CALCULATED POSITION

NOTE:
THIS LOT IS 8.5' FROM THE CL SIDE LINE TRACK



Lundee M Stadler
LUNDEE M STADLER RLS #13482

HOLTON ENGINEERING INC.